

# OPTION FOR BORACAY

Sec. Roy A. Cimatu

Department of Environment and Natural Resources

**Boracay Island (2008 and 2018)**

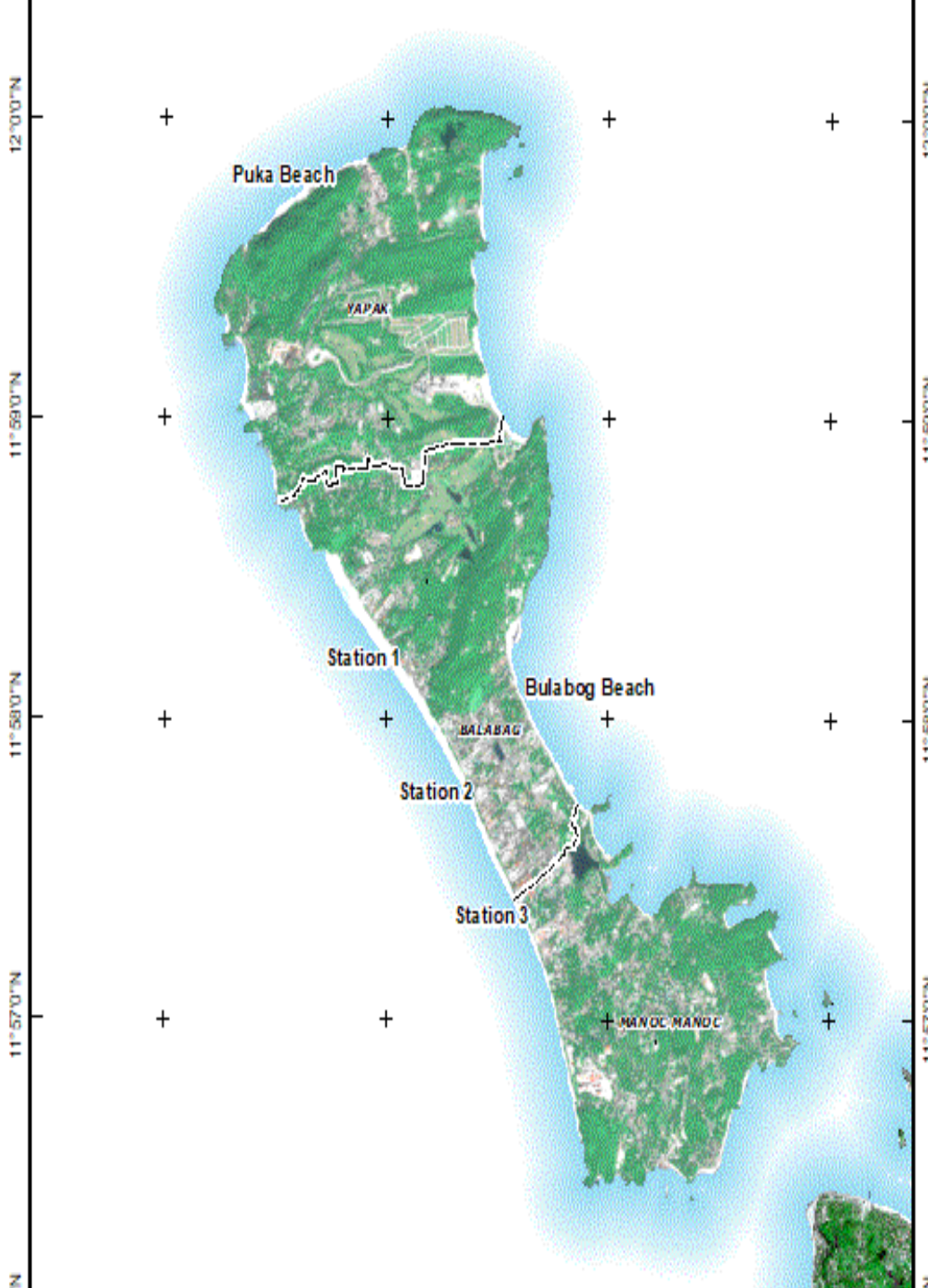


**Boracay Island (2008 and 2018)**



# OUTLINE

- A. Backgrounder
- B. Problems in the Area
- C. Action Plan
- D. Proposed Option



**Boracay Island Total Area as  
per LC 3642  
1,006.643 Ha.**

**Total population  
32,267 (PSA 2015)**

**Total no. of Workers  
17,000 (informal sector)  
19,000 (formal sector)**

# Comparison of Boracay Island Orthophoto 2008 and 2018

2008



January 2018



# Problems

## A. Drainage and Sewerage Management

# Drainage and Sewerage Management





# Problems

- A. Drainage and Sewerage Management
- B. Solid Waste Management

# Solid Waste Management



Date taken: 22 February 2018



Date taken: 15 March 2018



Date taken: 15 March 2018

# Problems

- A. Drainage and Sewerage Management
- B. Solid Waste Management
- C. Forest Lands and Easement Recovery and  
A&D Lands Management

# ON GOING ACTIVITIES IN BORACAY

□ Conducted survey of structures within Forestlands

- Surveyed a total of 948 establishments/structures

## Legend

● Structures within Forestland

□ Forestland

□ Wetland



# Forest Lands and Easement Recovery and A&D Lands Management



Date taken: 27 February 2018



Date taken: 27 February 2018

# Problems

- A. Drainage and Sewerage Management
- B. Solid Waste Management
- C. Forest Lands and Easement Recovery and  
A&D Lands Management
- D. Road and Transport

# Road and Transport



# Problems

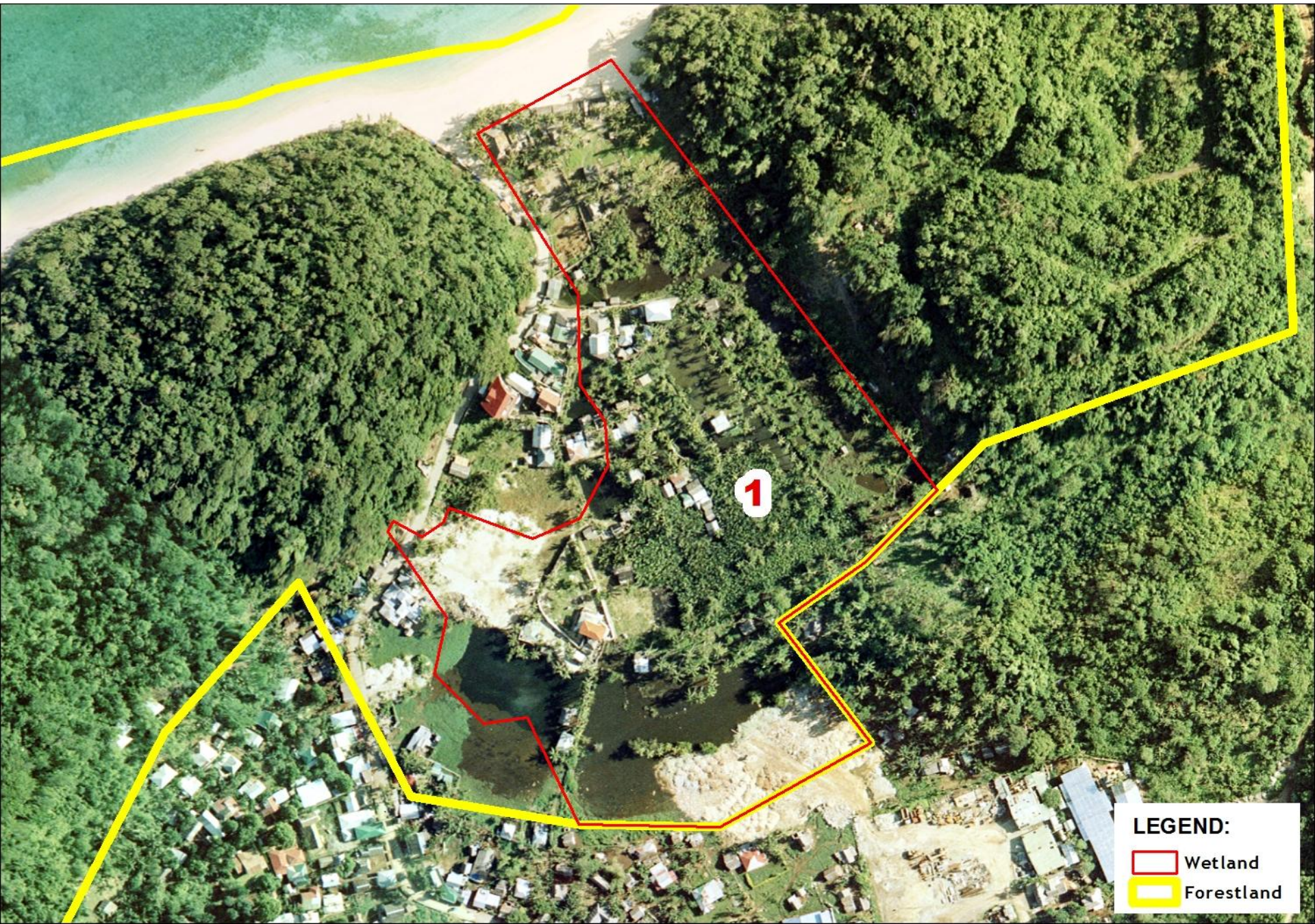
- A. Drainage and Sewerage Management
- B. Solid Waste Management
- C. Forest Lands and Easement Recovery and A&D Lands Management
- D. Road and Transport
- E. Biodiversity Conservation, Wetlands Rehabilitation and Geohazard Management



# Biodiversity Conservation, Wetlands Rehabilitation and Geohazard Management



# Wetland 1



## LEGEND:

-  Wetland
-  Forestland

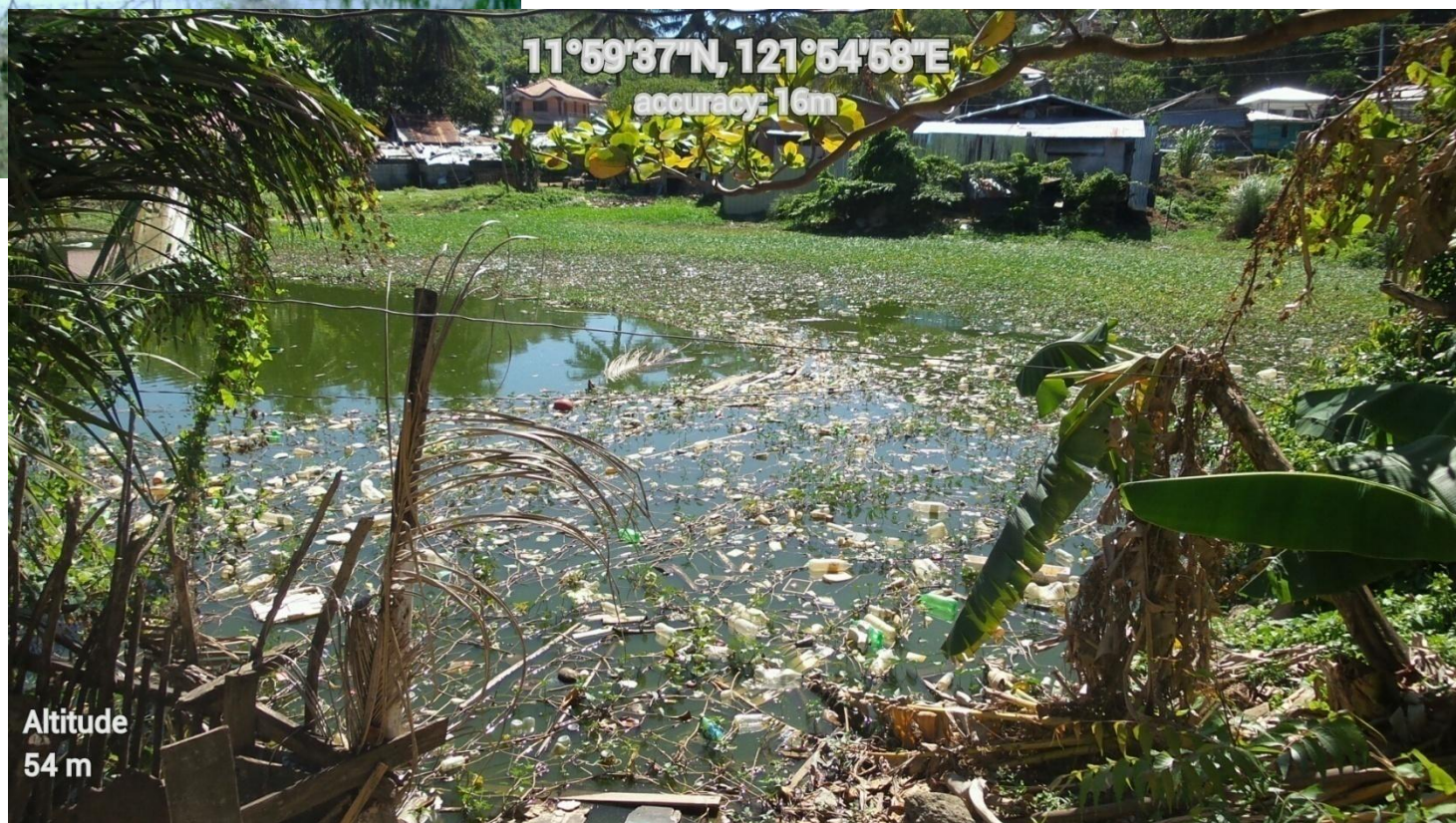
# Wetland 1



## LEGEND:

 Wetland

 Forestland



11°59'37"N, 121°54'59"E  
accuracy: 6m

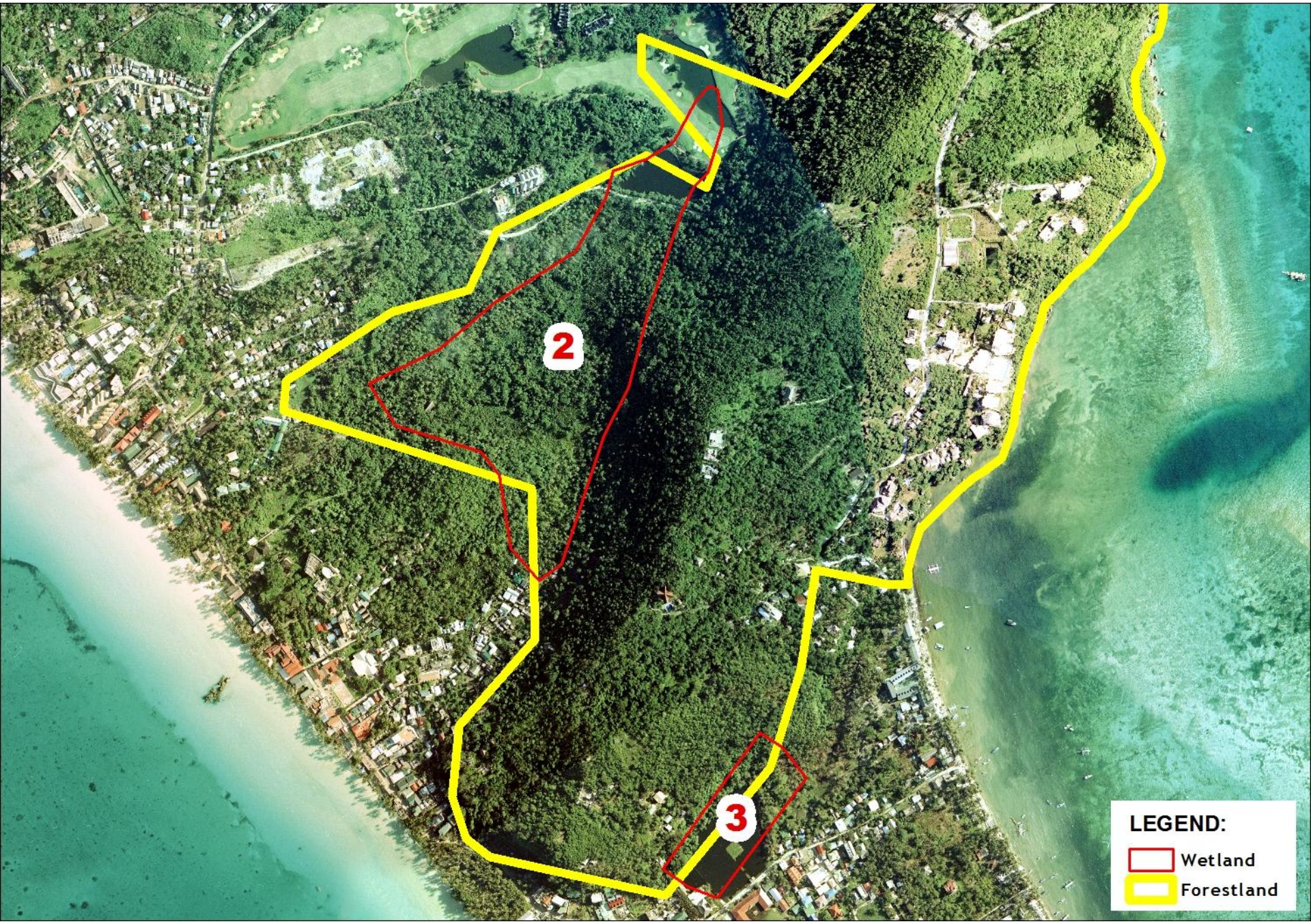


Altitude  
59 m





# Wetland 2 & 3



2

3

## LEGEND:

-  Wetland
-  Forestland

# Wetland 2 & 3



## LEGEND:

-  Wetland
-  Forestland



**11°58'26"N, 121°55'27"E**  
accuracy: 16m



**11°58'25"N, 121°55'28"E**  
accuracy: 16m



**Altitude  
65 m**

**Altitude  
63 m**

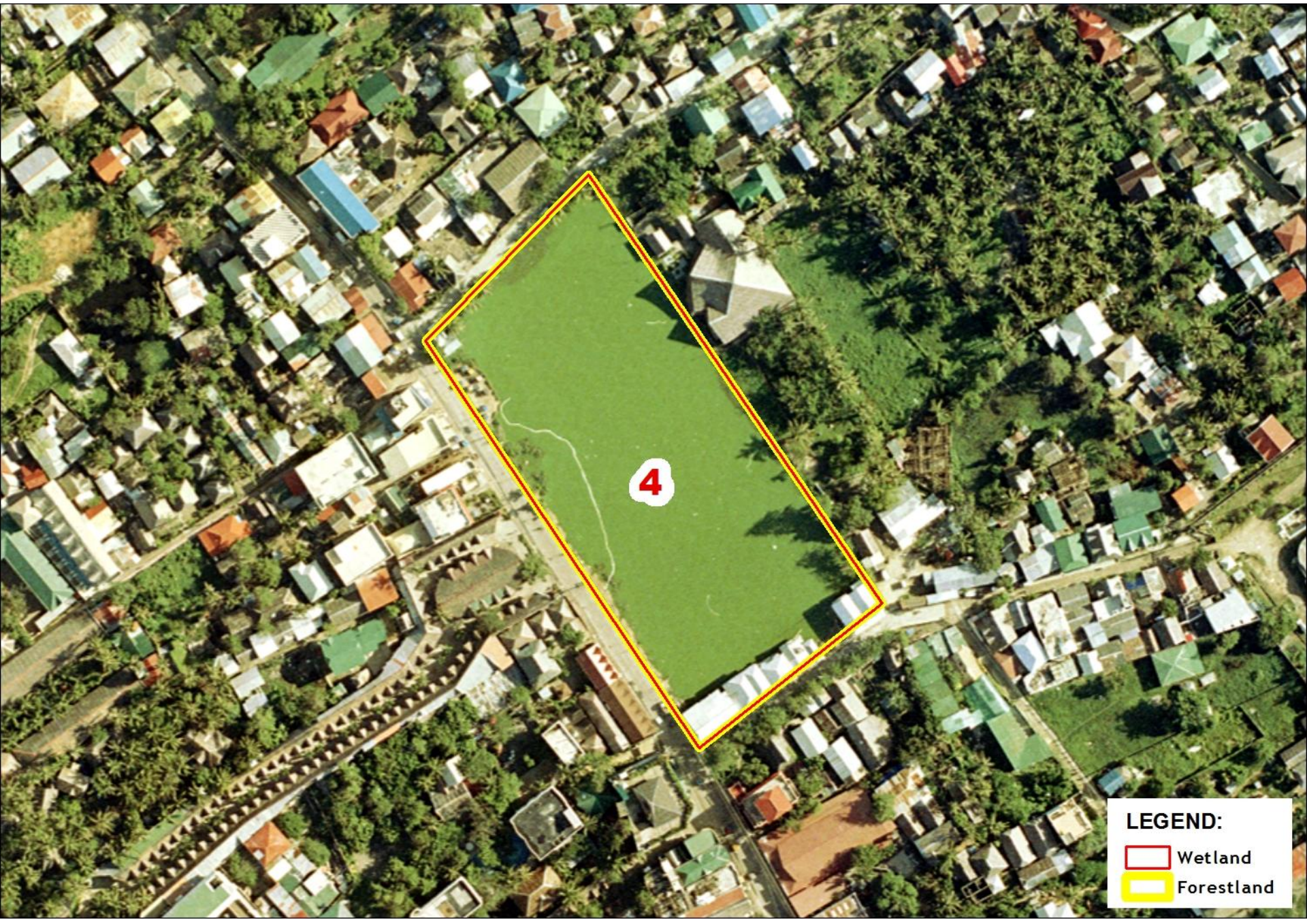
11°57'56"N, 121°  
accuracy: 4



03/01  
5 PM

Altitude  
56 m

# Wetland 4



## LEGEND:

-  Wetland
-  Forestland

# Wetland 4



11°57'47"N, 121°55'37"E

accuracy: 24m



2018/03/01

4:02 PM

Altitude  
88 m

# Wetland 5, 6, & 7



5

6

7

ATI

**LEGEND:**

-  Wetland
-  Forestland

# Wetland 5, 6, & 7



## LEGEND:

-  Wetland
-  Forestland





11°57'25"N, 121°56'3"E

accuracy: 6m

Altitude  
64m

2018/03/01

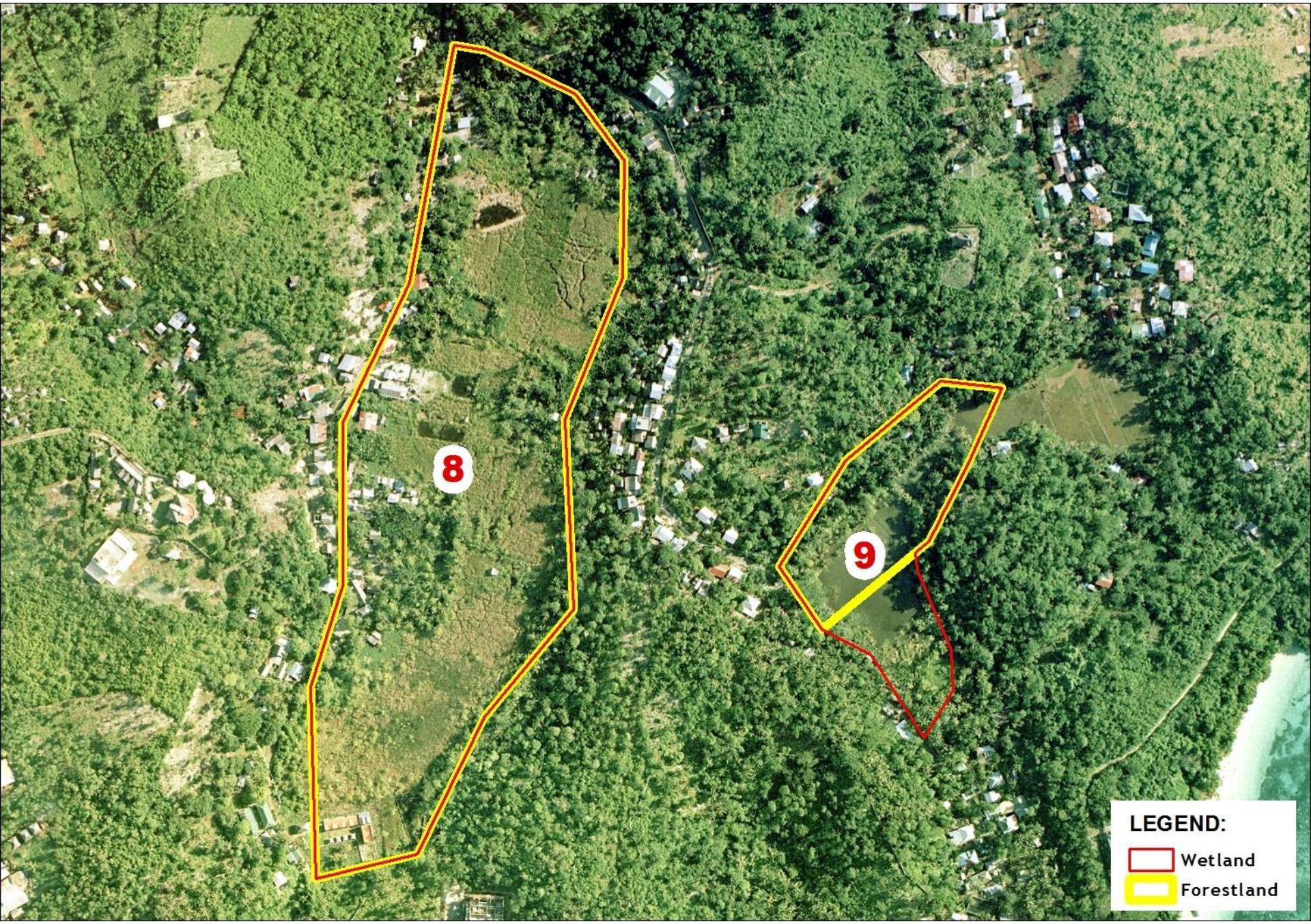
4:12 PM



**KINGFISHER'S FARM**



# Wetland 8 & 9



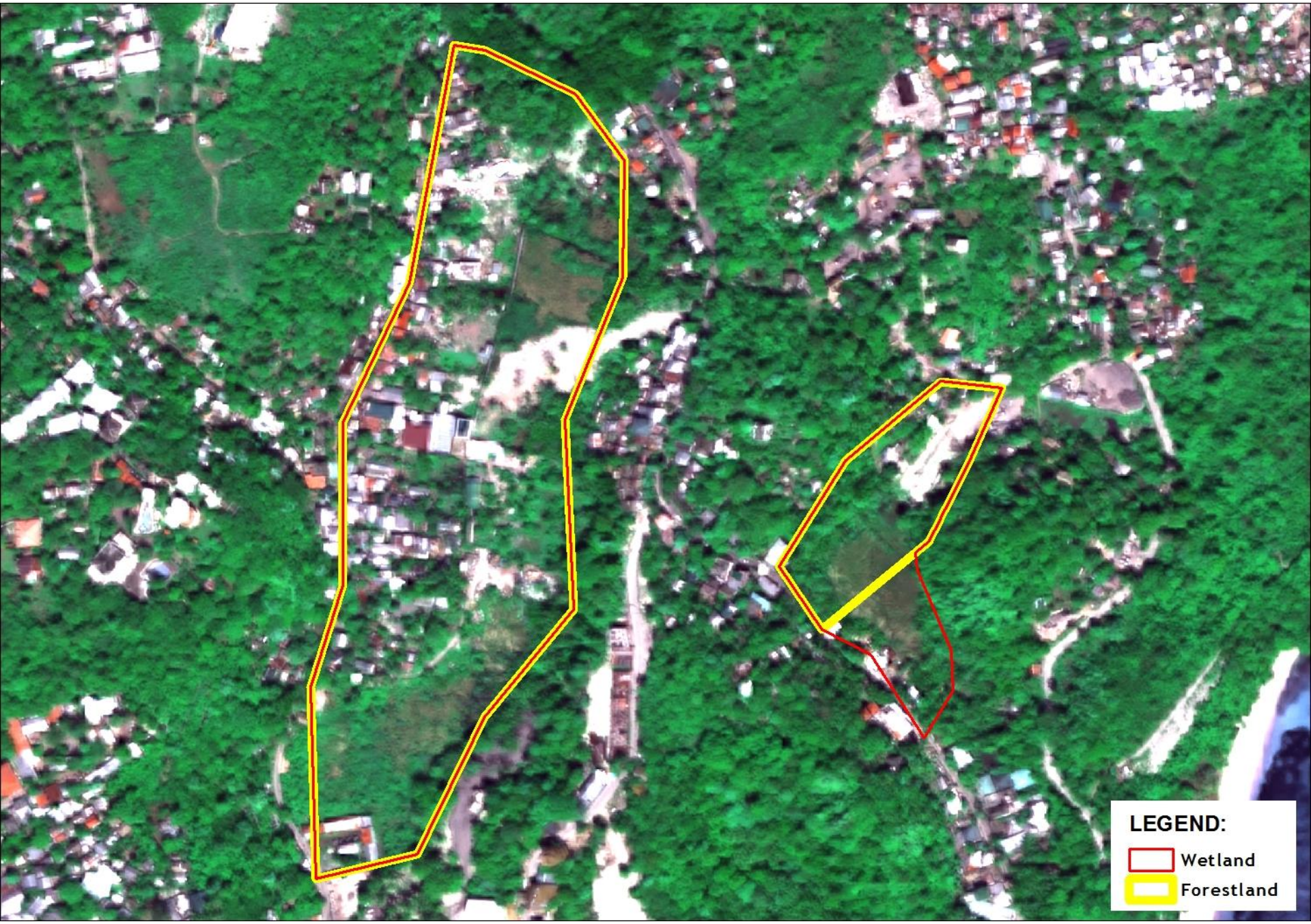
8

9

## LEGEND:

-  Wetland
-  Forestland

# Wetland 8 & 9

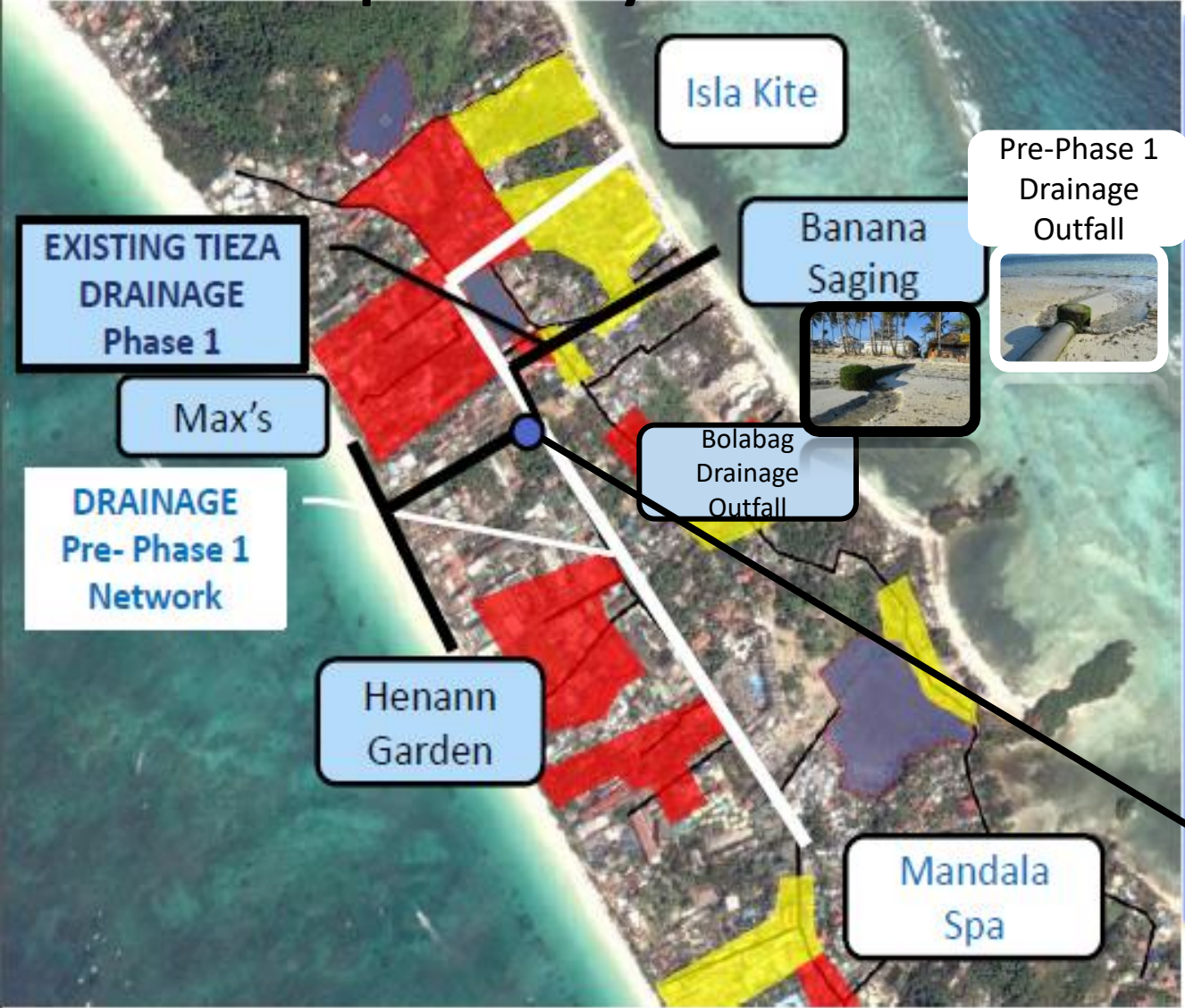


## LEGEND:

-  Wetland
-  Forestland



# Areas of Responsibility



EXISTING TIEZA DRAINAGE Phase 1

Max's

DRAINAGE Pre-Phase 1 Network

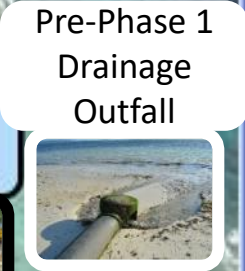
Henann Garden

Isla Kite

Banana Saging

Bolabag Drainage Outfall

Mandala Spa

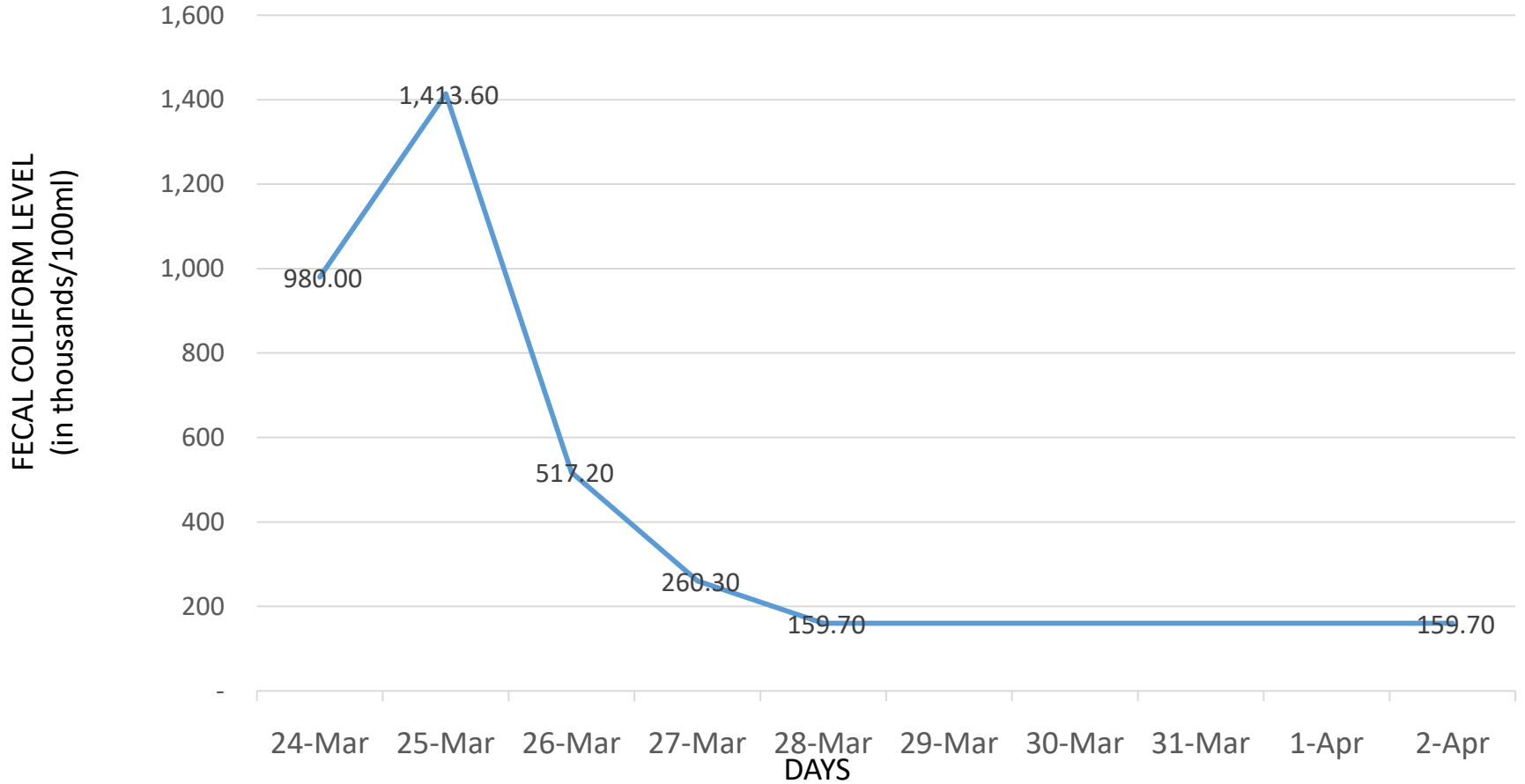


**DRAINAGE NETWORK**

-  TIEZA Drainage Phase 1
-  Pre-Phase 1

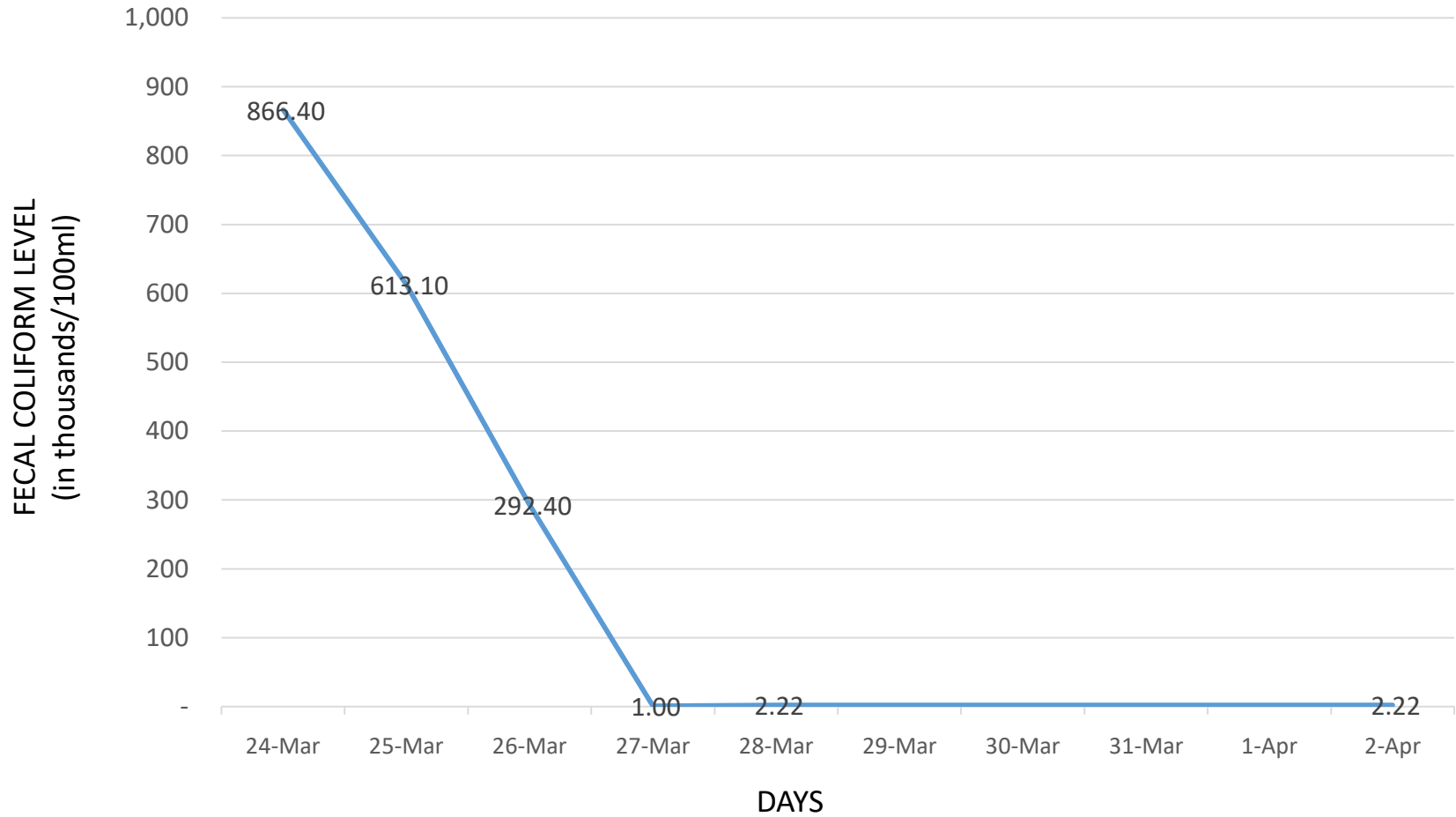


# DRAINAGE OUTFALL 2



\*STANDARD FECAL COLIFORM LEVEL IS 400 MPN/100ML

# DRAINAGE OUTFALL IA



\*STANDARD FECAL COLIFORM LEVEL IS 400 MPN/100ML



















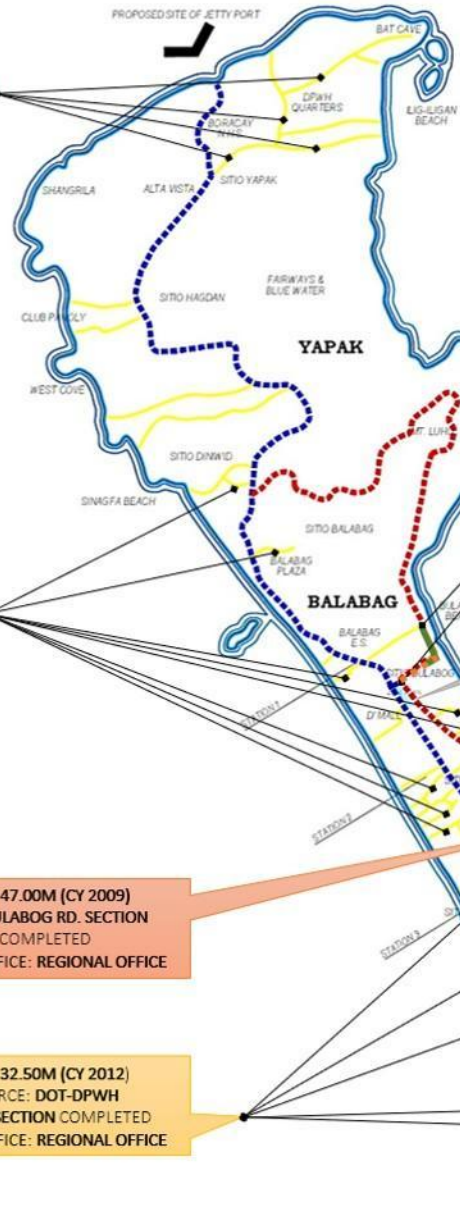


# Roads

	FEB	MAR	APR	MAY	JUN	JUL	AUG	SEP	OCT	NOV	DEC
Activity	Six month rehabilitation										
Construction of missing link of diversion road											

# MAP OF BORACAY CIRCUMFERENTIAL ROAD

AMOUNT: **Php 53.00M (CY 2012)**  
 FUND RESOURCE: **REGULAR**  
**YAPAK SECTION** (RECOMMENDED FOR MUTUAL TERMINATION)  
 IMPLEMENTING OFFICE: **REGIONAL OFFICE**



AMOUNT: **Php 50.00M (CY 2018)**  
**TULUBHAN TO BULABOG RD. SECTION**  
 IMPLEMENTING OFFICE: **DISTRICT OFFICE**  
 MISSING LINK (NEW ROAD OPENING)  
 L1 = 252.50 LM; L2 = 190.00 LM  
**TOTAL LENGTH = 442.50 LM**

AMOUNT: **Php 20.00M PART OF 52.38M (CY 2011)**  
**TULUBHAN TO BULABOG RD. SECTION (PHASE-III) COMPLETED**  
 IMPLEMENTING OFFICE: **REGIONAL OFFICE**

AMOUNT: **Php 30.00M (CY 2010)**  
**TULUBHAN TO BULABOG RD. SECTION (PHASE-II) COMPLETED**  
 IMPLEMENTING OFFICE: **DISTRICT OFFICE**

AMOUNT: **Php 10.00M PART OF 52.38M (CY 2011)**  
**TULUBHAN TO BULABOG RD. SECTION (PHASE-I) COMPLETED**  
 IMPLEMENTING OFFICE: **REGIONAL OFFICE**

AMOUNT: **Php 32.50M (CY 2013)**  
 FUND RESOURCE: **REGULAR**  
**BALABAG SECTION COMPLETED**  
 IMPLEMENTING OFFICE: **DISTRICT OFFICE**

AMOUNT: **Php 47.00M (CY 2009)**  
**TULUBHAN TO BULABOG RD. SECTION (PHASE-I) COMPLETED**  
 IMPLEMENTING OFFICE: **REGIONAL OFFICE**

AMOUNT: **Php 32.50M (CY 2012)**  
 FUND RESOURCE: **DOT-DPWH**  
**MANOC-MANOC SECTION COMPLETED**  
 IMPLEMENTING OFFICE: **REGIONAL OFFICE**

- LEGEND:**
- MAIN ACCESS ROAD
  - CIRCUMFERENTIAL ROAD
  - EXISTING ACCESS ROAD
  - NEW ROAD OPENING
  - BEACH FRONT



















**THANK YOU!**