

CLIMATE CHANGE ADAPTATION AND MITIGATION CLUSTER



December 2011

Philippine Development Plan: 2011-2016

1. Enhanced resilience of natural systems and communities

2. Improved environmental quality

3. Improved conservation, protection and rehabilitation of natural resources



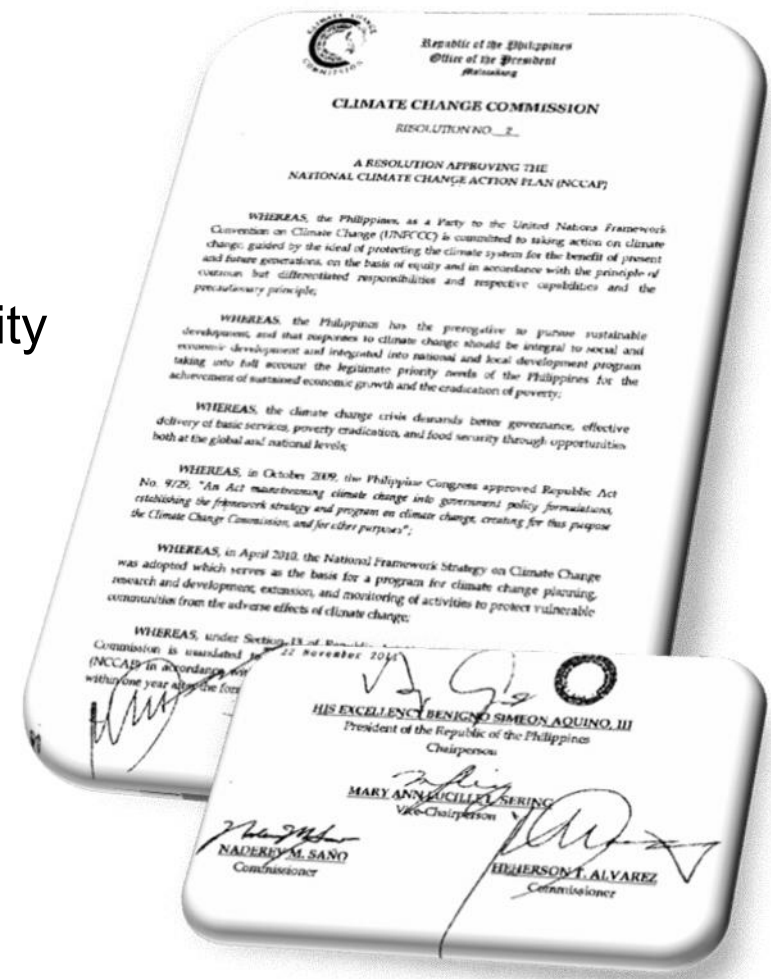
Enhanced resilience of natural systems and communities

ENHANCED RESILIENCE OF NATURAL SYSTEMS AND COMMUNITIES

APPROVED NATIONAL CLIMATE CHANGE ACTION PLAN: 2011-2028

▪ Defined 7 strategic priorities:

- (1) Food security
- (2) Water sufficiency
- (3) Ecosystems and environmental stability
- (4) Human security
- (5) Climate-smart industries and services
- (6) Sustainable energy
- (7) Knowledge and capacity development



ENHANCED RESILIENCE OF NATURAL SYSTEMS AND COMMUNITIES

IMPROVED WEATHER FORECASTING

- **Enhanced Doppler Radar Network for National Weather Watch, Accurate Forecasting and Flood Early Warning**

Installed state of the art Doppler Radars in Subic, Tagaytay, Hinatuan & Cebu.



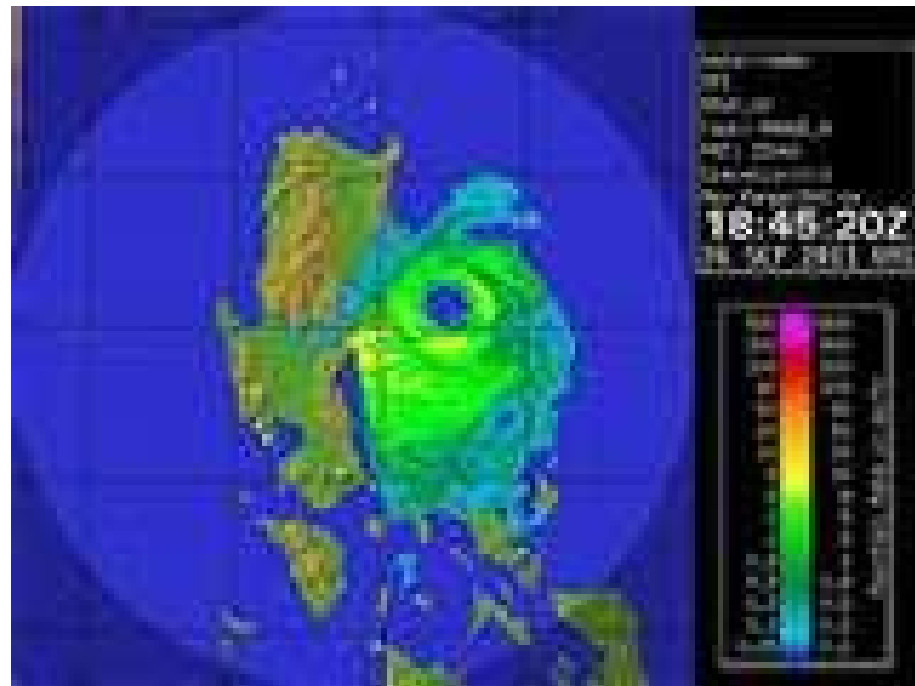
ENHANCED RESILIENCE OF NATURAL SYSTEMS AND COMMUNITIES

IMPROVED WEATHER FORECASTING

- **Enhanced Doppler Radar Network for National Weather Watch, Accurate Forecasting and Flood Early Warning**

Upgraded to
Doppler capability –
Baguio & Baler

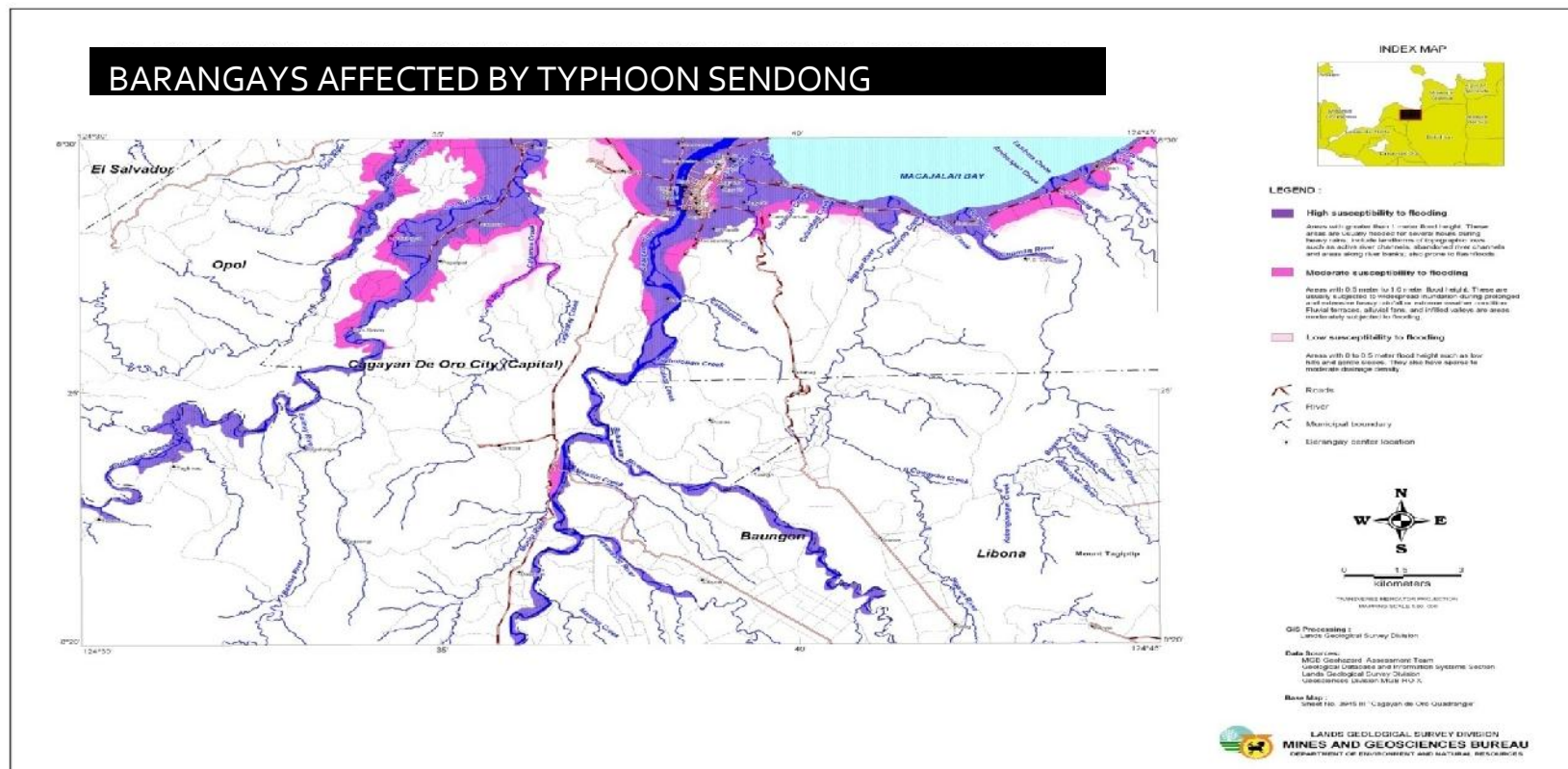
Target (2012 –
2014): Installation in
Virac, Aparri &
Guiuan in Samar



ENHANCED RESILIENCE OF NATURAL SYSTEMS AND COMMUNITIES

GEOHAZARD ASSESSMENT AND MAPPING

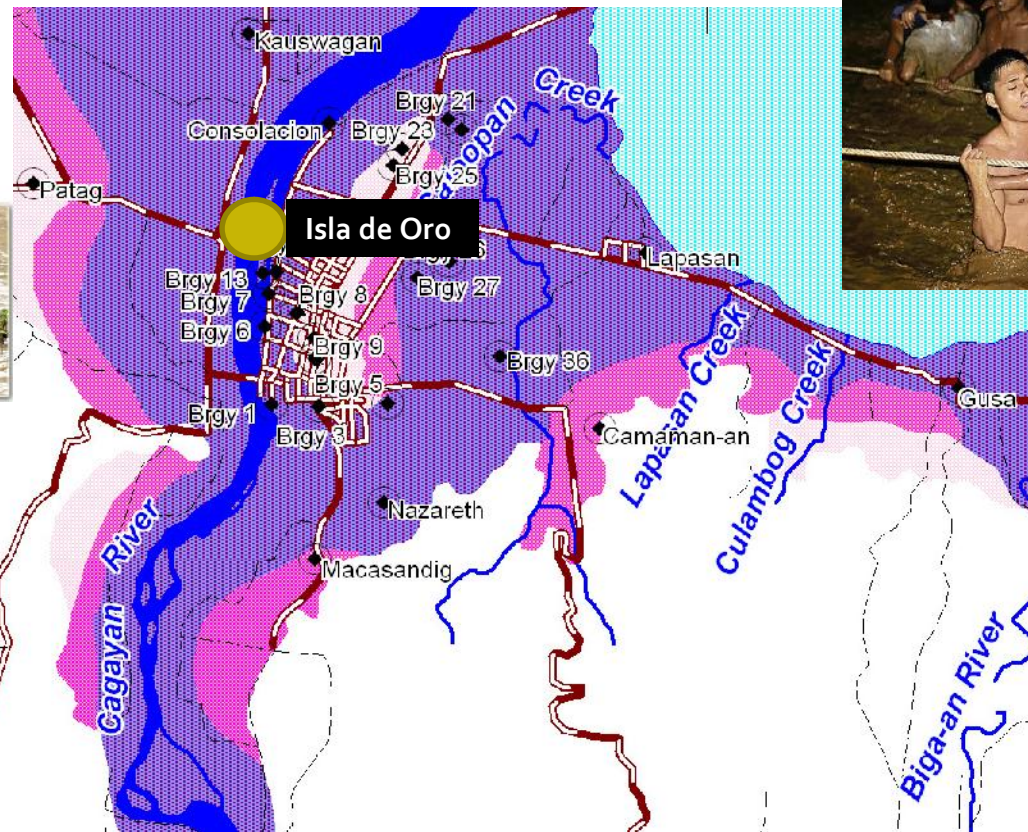
- Geohazard maps (1:50,000) completed nationwide and 65,000 distributed to LGUs



ENHANCED RESILIENCE OF NATURAL SYSTEMS AND COMMUNITIES

GEOHAZARD ASSESSMENT AND MAPPING

- More detailed geohazard mapping (1:10,000) of 172 municipalities/cities completed



ENHANCED RESILIENCE OF NATURAL SYSTEMS AND COMMUNITIES

GEOHAZARD ASSESSMENT AND MAPPING

BEFORE

DENR-MGB Landslide Warning Signage



AFTER



- Precise identification of geohazard areas
- Relocation is necessary to avoid fatalities

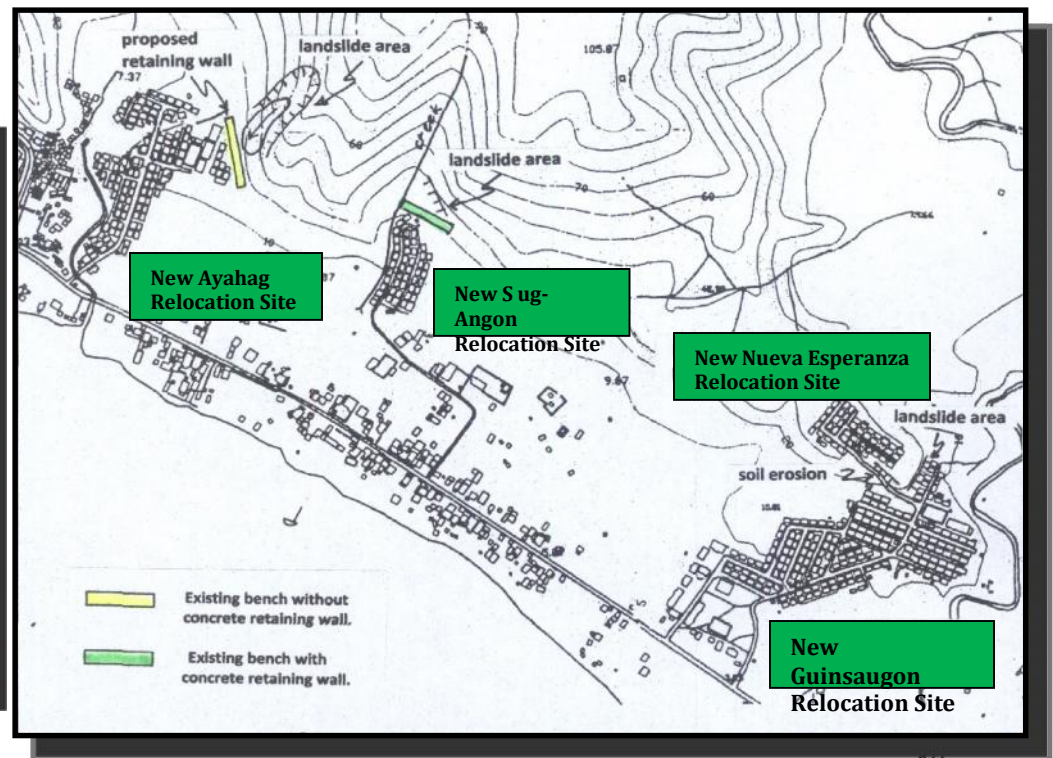
ENHANCED RESILIENCE OF NATURAL SYSTEMS AND COMMUNITIES

GEOHAZARD ASSESSMENT AND MAPPING

- Identified relocation sites for landslide affected communities



Guinsaugon, South Leyte, 2006



Existing Relocation Sites

ENHANCED RESILIENCE OF NATURAL SYSTEMS AND COMMUNITIES PRODUCED CLIMATE CHANGE RESILIENT RICE VARIETIES

- 20,400 kilos of submergence-tolerant varieties distributed
- 1,200 kilos of drought-tolerant varieties distributed



ENHANCED RESILIENCE OF NATURAL SYSTEMS AND COMMUNITIES PRODUCED CLIMATE CHANGE RESILIENT RICE VARIETIES

- 9 newly bred drought-tolerant varieties approved for commercial cultivation.
- 8 saline-tolerant varieties ready for multiplication and eventual distribution in saline-affected areas

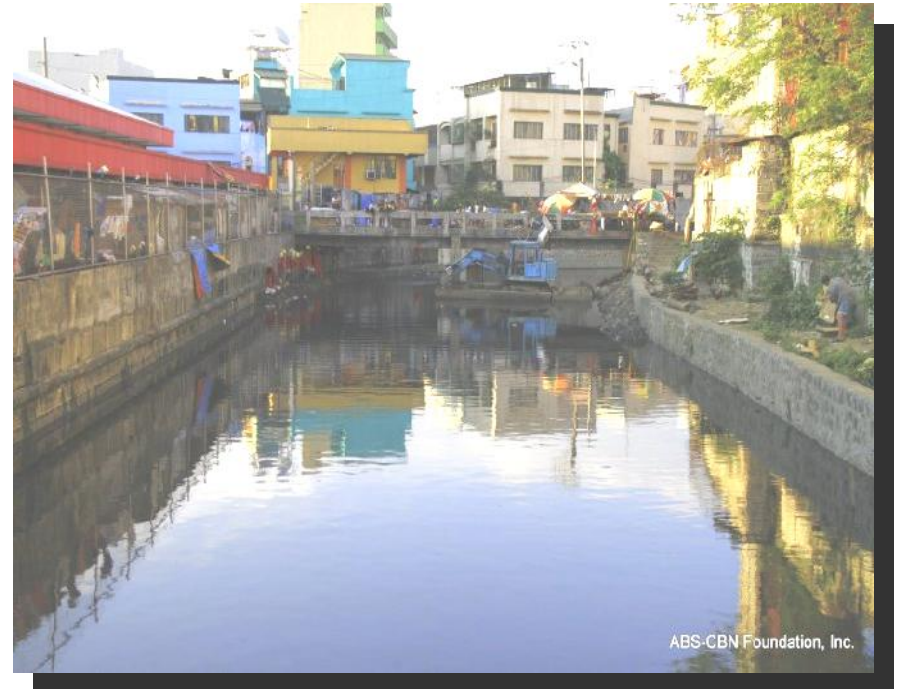


Improved Environmental Quality

IMPROVED ENVIRONMENTAL QUALITY

CLEAN WATER

- Adopt an Estero/River Program



- Water Bodies Adopted Nationwide = 162
- Agreements Signed = 243

IMPROVED ENVIRONMENTAL QUALITY

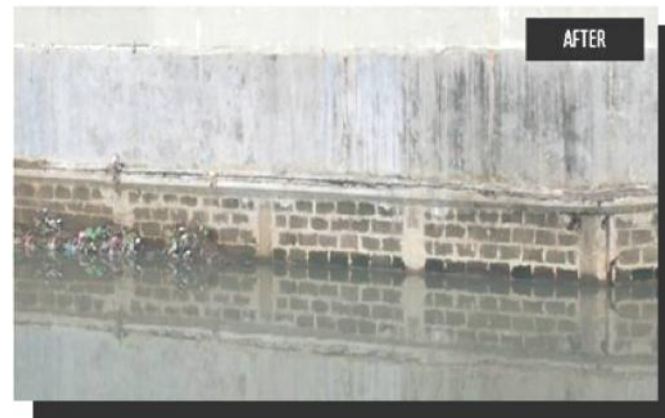
CLEAN WATER

- Adopt an Estero/River Program

Before

After

- Tullahan River (Malabon)-adopted by San Miguel Corp.



- Tullahan River (Valenzuela)-adopted by NLEX Corporation.



IMPROVED ENVIRONMENTAL QUALITY CLEAN WATER

■ Adopt an Estero/River Program

Before

After

- Maricaban Creek (Pasay, Paranaque, Taguig, Makati) –adopted by Skyway Operators and Management Corp.



IMPROVED ENVIRONMENTAL QUALITY

CLEAN WATER

Adopt an Estero/River Program

Before

After

- Quinokol Creek (Sta. Cruz, Davao del Sur)- adopted by Senorita Farms and CJ Toyota Tsusho Inc.



- San Isidro Creek (Davao City)-adopted by LGU



IMPROVED ENVIRONMENTAL QUALITY

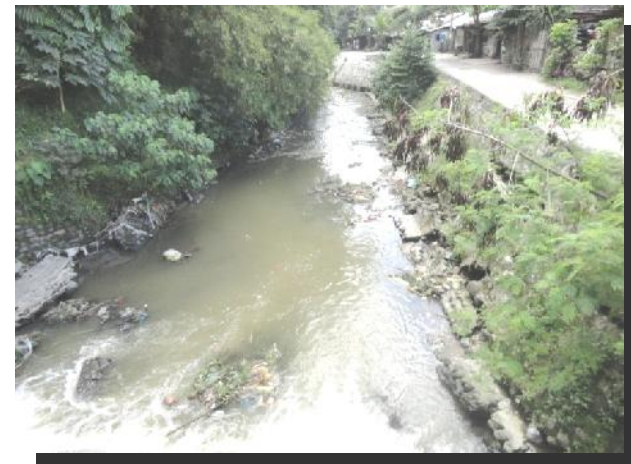
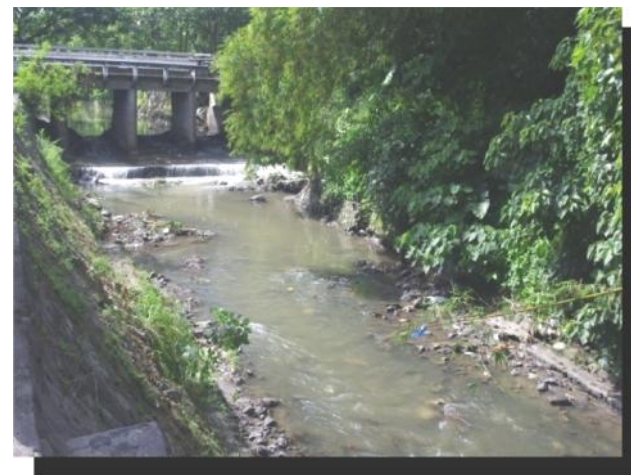
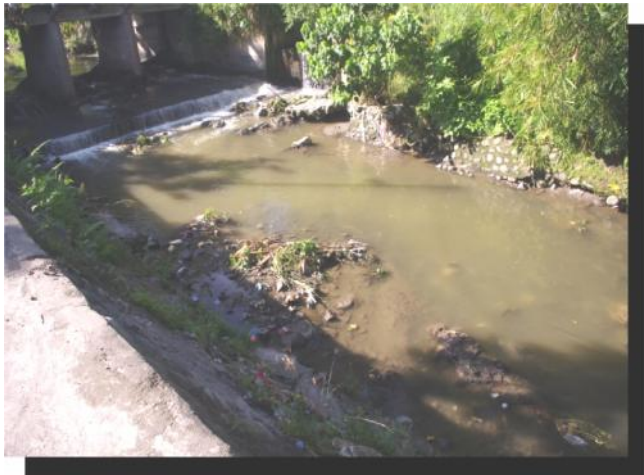
CLEAN WATER

Adopt an Estero/River Program

Before

After

- Bulok Creek (Koronadal City) adopted by KCC Mall of Marbel



IMPROVED ENVIRONMENTAL QUALITY

CLEAN WATER

- Adopt an Estero/River Program

Before

After

- Baslayan Creek (Iligan City)- adopted by Caltex, Petron, etc.



IMPROVED ENVIRONMENTAL QUALITY

CLEAN WATER

■ Adopt an Estero/River Program

Before

After

- Estero de Paco, Manila (ABS-CBN Foundation)



IMPROVED ENVIRONMENTAL QUALITY

CLEAN WATER

Adopt an Estero/River Program

Before

After

- Estero de Paco, Manila (ABS-CBN Foundation)



IMPROVED ENVIRONMENTAL QUALITY

CLEAN WATER

- **Adopt an Estero/River Program**
 - Estero de Paco, Manila (ABS-CBN Foundation)



(Philippine Star, 5 August 2011)

IMPROVED ENVIRONMENTAL QUALITY

CLEAN WATER

- Adopt an Estero/River Program



IMPROVED ENVIRONMENTAL QUALITY

CLEAN WATER

- **Manila Bay Clean up**
 - 1,977 truckloads of garbage collected from waterways and coastal areas in 2011



IMPROVED ENVIRONMENTAL QUALITY

CLEAN WATER

- Manila Bay Clean up



Continuing clean up with public participation

IMPROVED ENVIRONMENTAL QUALITY

CLEAN WATER

- Manila Bay Clean up



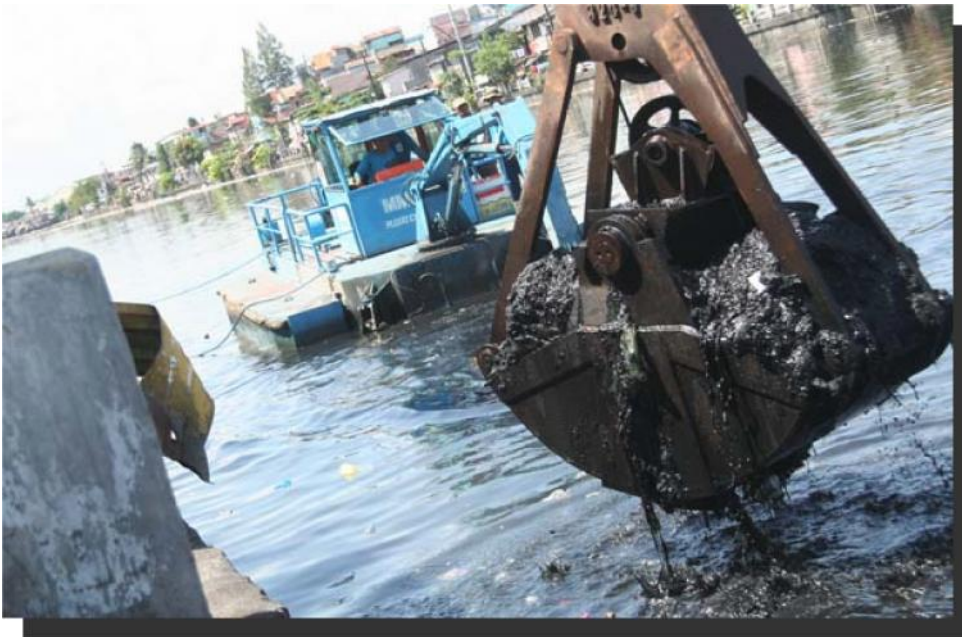
Continuing clean-up thru convergence (DENR, DILG, DPWH, DND, MMDA, LGUs, etc.)

IMPROVED ENVIRONMENTAL QUALITY

CLEAN WATER

- Manila Bay Clean up

Next Steps



trash boats

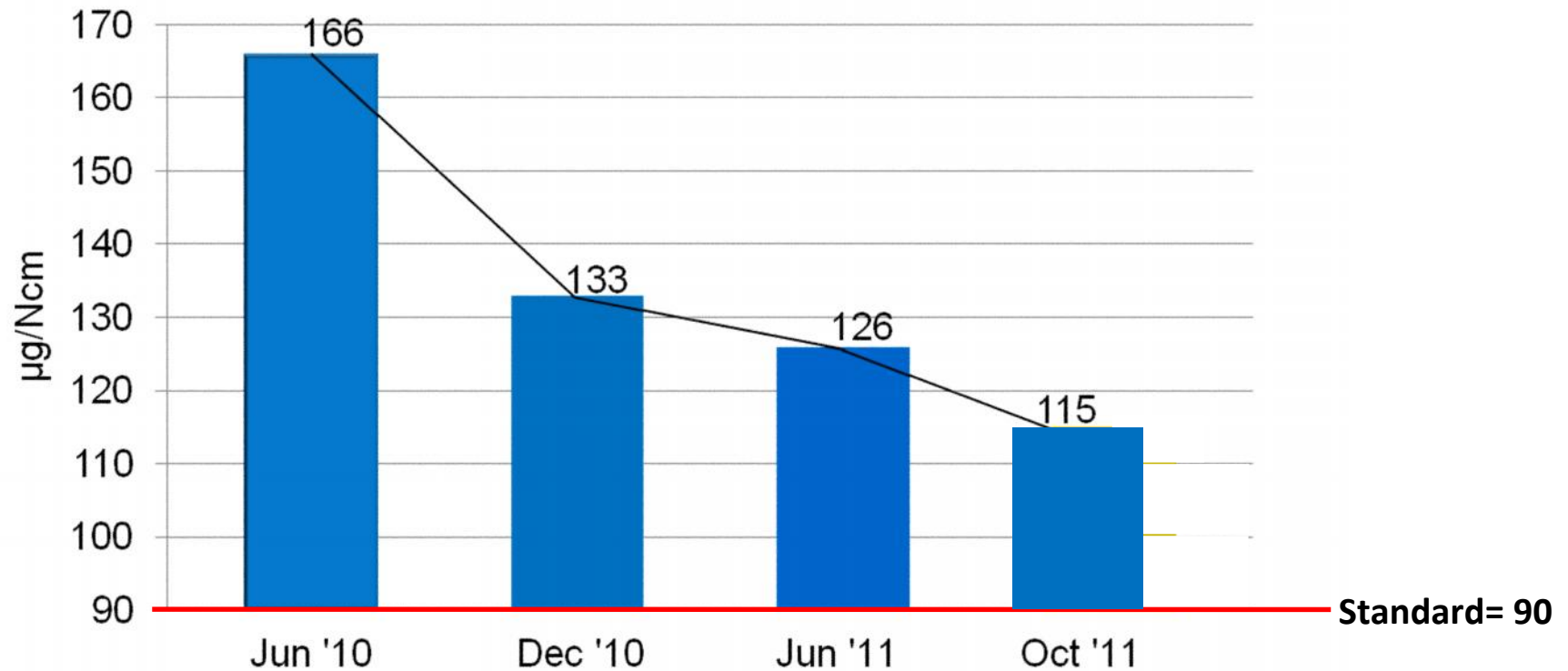


trash skimmer

IMPROVED ENVIRONMENTAL QUALITY

CLEAN AIR

NCR Total Suspended Particulates
(June 2010- October 2011)



Air pollution reduced by 30.7 % (from 166 to 115 µg/Ncm)

IMPROVED ENVIRONMENTAL QUALITY

CLEAN AIR

- Intensified anti smoke belching campaign
 - 32,069 vehicles apprehended (2011)



IMPROVED ENVIRONMENTAL QUALITY

CLEAN AIR

- **Air Pollution Campaign for Stationary Sources**
 - Notice of violations issued = 605 (2011)



IMPROVED ENVIRONMENTAL QUALITY

CLEAN AIR

- Improved fuel quality
 - Sulfur content reduced from 0.2% to 0.05% by weight



IMPROVED ENVIRONMENTAL QUALITY

CLEAN AIR

- Introduced electric vehicles



IMPROVED ENVIRONMENTAL QUALITY

CLEAN AIR

- **Active civil society participation**



Text Usok to DENR/LTO

IMPROVED ENVIRONMENTAL QUALITY

CLEAN AIR

- **Next Steps**

- **MMDA Urban Greening (EDSA)**



IMPROVED ENVIRONMENTAL QUALITY

CLEAN AIR

- **Next Steps**

- MMDA Urban Greening (EDSA)



IMPROVED ENVIRONMENTAL QUALITY

CLEAN AIR

- **Next Steps**

- Volume Reduction



IMPROVED ENVIRONMENTAL QUALITY

CLEAN AIR

- Next Steps
 - No parking - no car policy



IMPROVED ENVIRONMENTAL QUALITY

CLEAN AIR

- **Next Steps**
 - Vehicle Aging

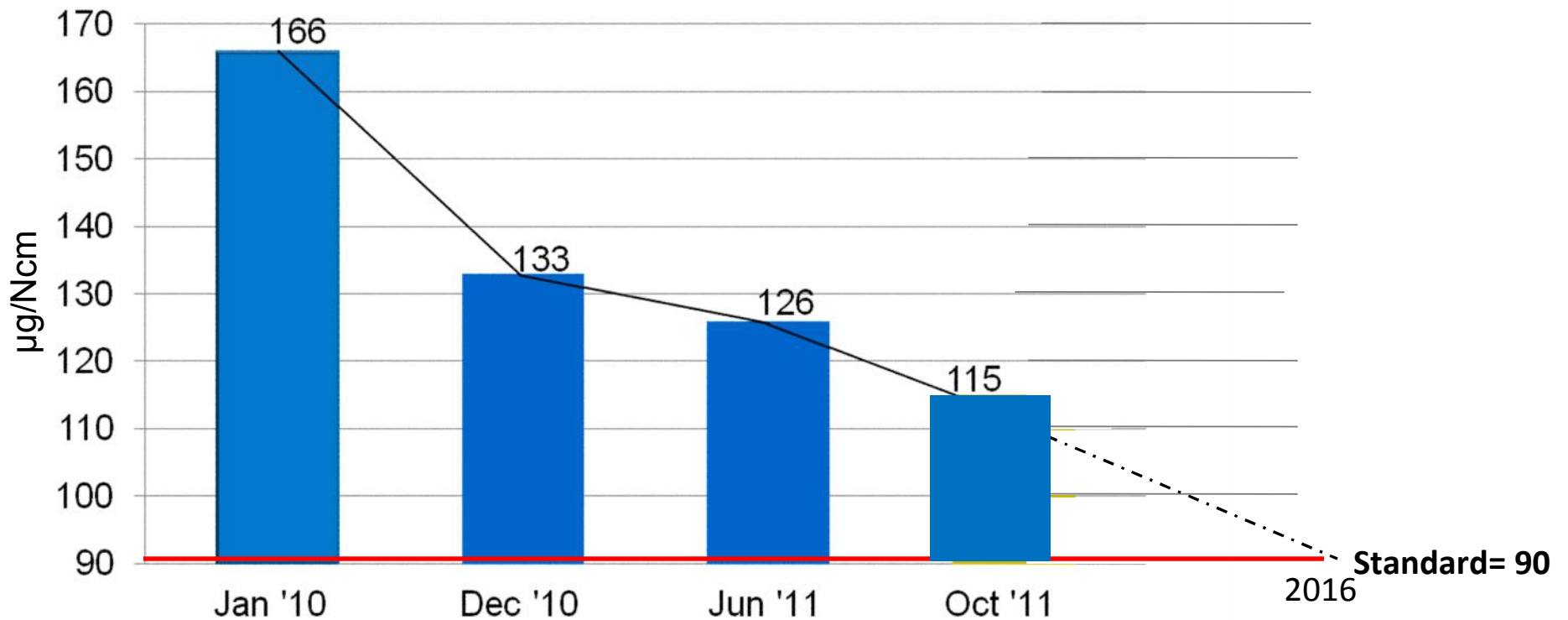


IMPROVED ENVIRONMENTAL QUALITY

CLEAN AIR

- **Air Quality Target 2016**

NCR Total Suspended Particulates



Improved Conservation, Protection and Rehabilitation of Natural Resources

IMPROVED CONSERVATION, PROTECTION AND REHABILITATION OF NATURAL RESOURCES

E.O. 23 – TOTAL LOGGING BAN

- **Anti-illegal Logging Enforcement**

Confiscated Logs	- 10,703,704 bd. Ft
Cases Filed	- 452
Convictions	- 72



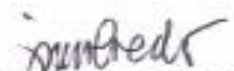
IMPROVED CONSERVATION, PROTECTION AND REHABILITATION OF NATURAL RESOURCES

E.O. 23 – TOTAL LOGGING BAN

- **Anti-illegal Logging Enforcement**

- **AILTF Resolution No. 6 (November 28, 2011)**

“DECLARING ALL LOGS AND LUMBER DERIVED FROM THE NATURAL/ RESIDUAL FORESTS OF THE PHILIPPINES AS OWNED BY THE STATE”


Hon. JESSE M. ROBREDO
Secretary, DILG


Hon. VOLTAIRE T. GAZMIN
Secretary, DND


Gen. NICANOR A. BARTOLOME
Chief, PNP


Gen. EDUARDO S. OBAN, JR.
Chief of Staff, AFP


Hon. RAMON J.P. PAJE
Secretary, DENR
Chairman

IMPROVED CONSERVATION, PROTECTION AND REHABILITATION OF NATURAL RESOURCES

E.O. 23 – TOTAL LOGGING BAN

- **Anti-illegal Logging Enforcement**
 - **Lost 8 Enforcers in 8 months**



Financial and Educational Assistance to “ Environmental Heroes”

IMPROVED CONSERVATION, PROTECTION AND REHABILITATION OF NATURAL RESOURCES

E.O. 23 – TOTAL LOGGING BAN

- Processed logs donated to DepEd & other agencies

- Chairs – 38,038
- Tables/desks, etc – 2,939
- Building repair – 254



IMPROVED CONSERVATION, PROTECTION AND REHABILITATION OF NATURAL RESOURCES

E.O. 23 – TOTAL LOGGING BAN

- Processed logs donated to DepEd & other agencies



IMPROVED CONSERVATION, PROTECTION AND REHABILITATION OF NATURAL RESOURCES

E.O. 23 – TOTAL LOGGING BAN

- Processed logs donated to DepEd & other agencies



IMPROVED CONSERVATION, PROTECTION AND REHABILITATION OF NATURAL RESOURCES

E.O. 23 – TOTAL LOGGING BAN

- Processed logs donated to DepEd & other agencies



IMPROVED CONSERVATION, PROTECTION AND REHABILITATION OF NATURAL RESOURCES

E.O. 26 NATIONAL GREENING PROGRAM

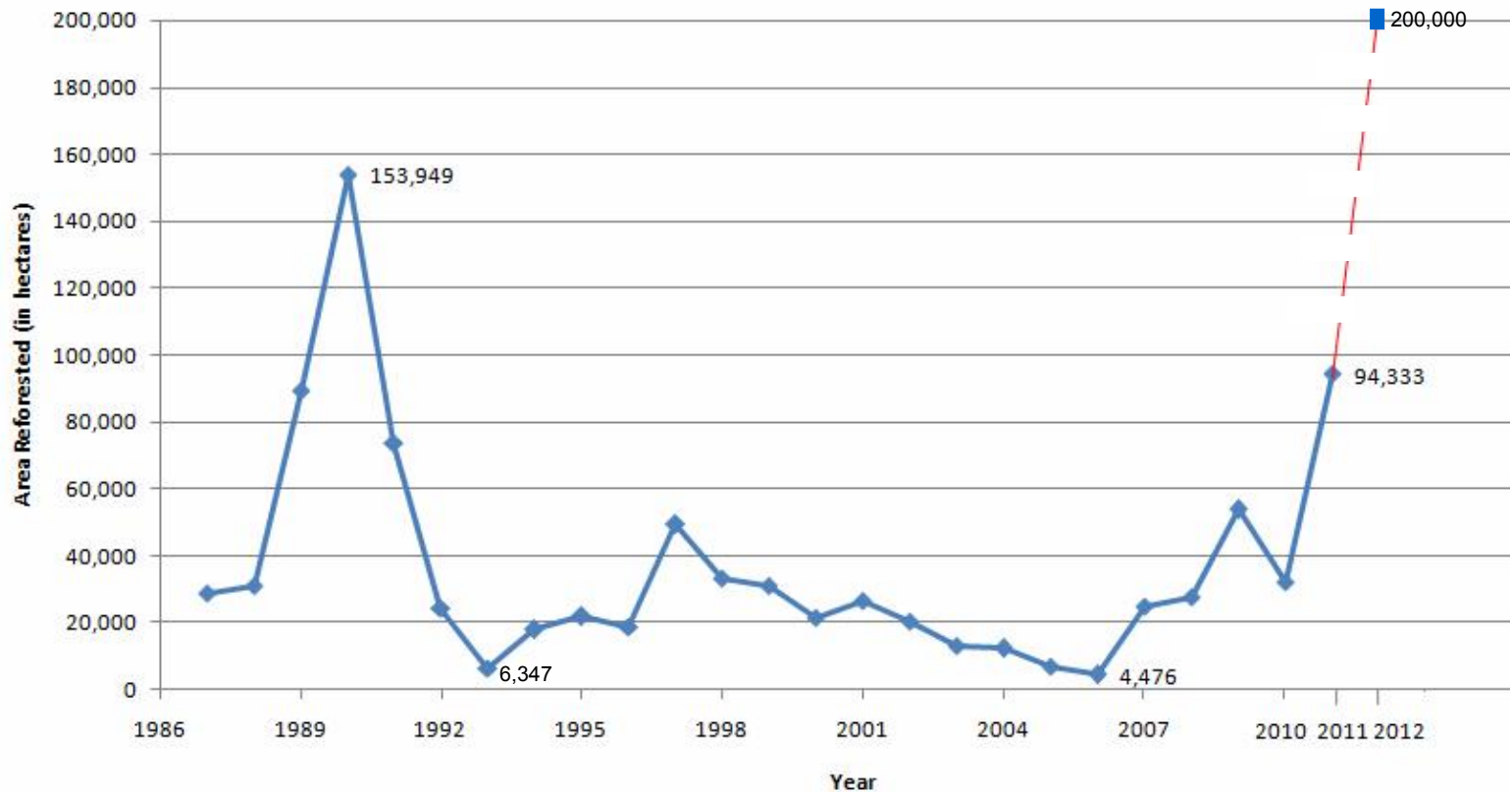
- Poverty Reduction
- Food Security
- Climate Change Mitigation



IMPROVED CONSERVATION, PROTECTION AND REHABILITATION OF NATURAL RESOURCES

GOVERNMENT TREE PLANTING PROGRAM

Year	Area reforested (in ha)
2012	200,000
2011	94,333
2010	32,382
2009	53,840
2008	27,752
2007	25,026
2006	4,476
2005	7,187
2004	12,435
2003	13,195
2002	20,682
2001	26,524
2000	21,740
1999	31,184
1998	33,219
1997	49,301
1996	18,869
1995	21,841
1994	18,032
1993	6,347
1992	24,304
1991	73,602
1990	153,949
1989	89,452
1988	31,226
1987	28,843









IMPROVED CONSERVATION, PROTECTION AND REHABILITATION OF NATURAL RESOURCES

E.O. 26 NATIONAL GREENING PROGRAM

Maasin , Leyte (Bogo Women's Association)



IMPROVED CONSERVATION, PROTECTION AND REHABILITATION OF NATURAL RESOURCES

E.O. 26 NATIONAL GREENING PROGRAM



IMPROVED CONSERVATION, PROTECTION AND REHABILITATION OF NATURAL RESOURCES

E.O. 26 NATIONAL GREENING PROGRAM

Bagac, Bataan
(Background is ADB Loan 1 Reforestation - 1990)



IMPROVED CONSERVATION, PROTECTION AND REHABILITATION OF NATURAL RESOURCES

E.O. 26 NATIONAL GREENING PROGRAM

2011 Areas Planted (has):
(as of Dec. 14, 2011)

- **NGP/CI** – 78,960
- **DILG** – 15,373
- **Other partners** – 20,433
- Total** 114,766



IMPROVED CONSERVATION, PROTECTION AND REHABILITATION OF NATURAL RESOURCES

E.O. 26 NATIONAL GREENING PROGRAM

2011 Seedlings Produced/Planted

NGP/CI – 41,463,667

DILG – 19,216,233

Other Partners – 8,230,698

Total 68,910,598



IMPROVED CONSERVATION, PROTECTION AND REHABILITATION OF NATURAL RESOURCES

E.O. 26 NATIONAL GREENING PROGRAM

▪ Jobs Generated

Seedlings production
- 258,000



Plantation establishment
- 97,000

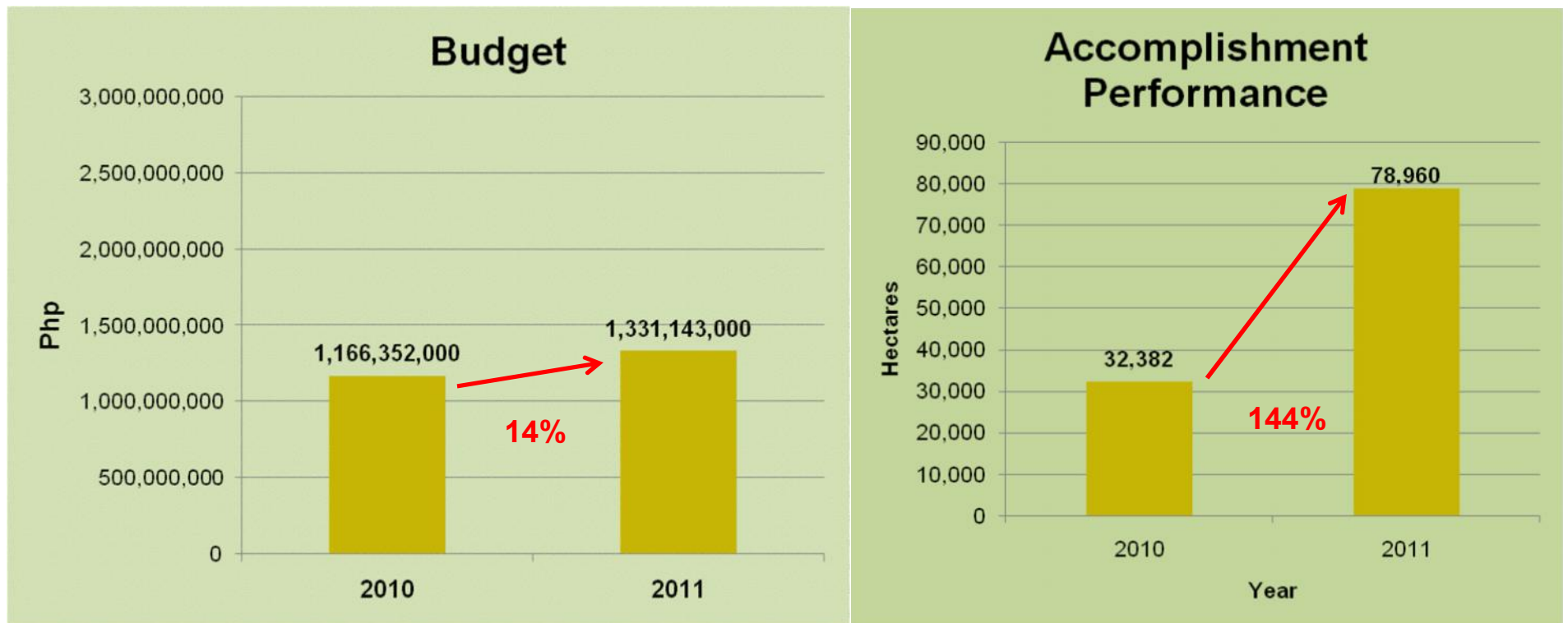


TOTAL: 355,000.00

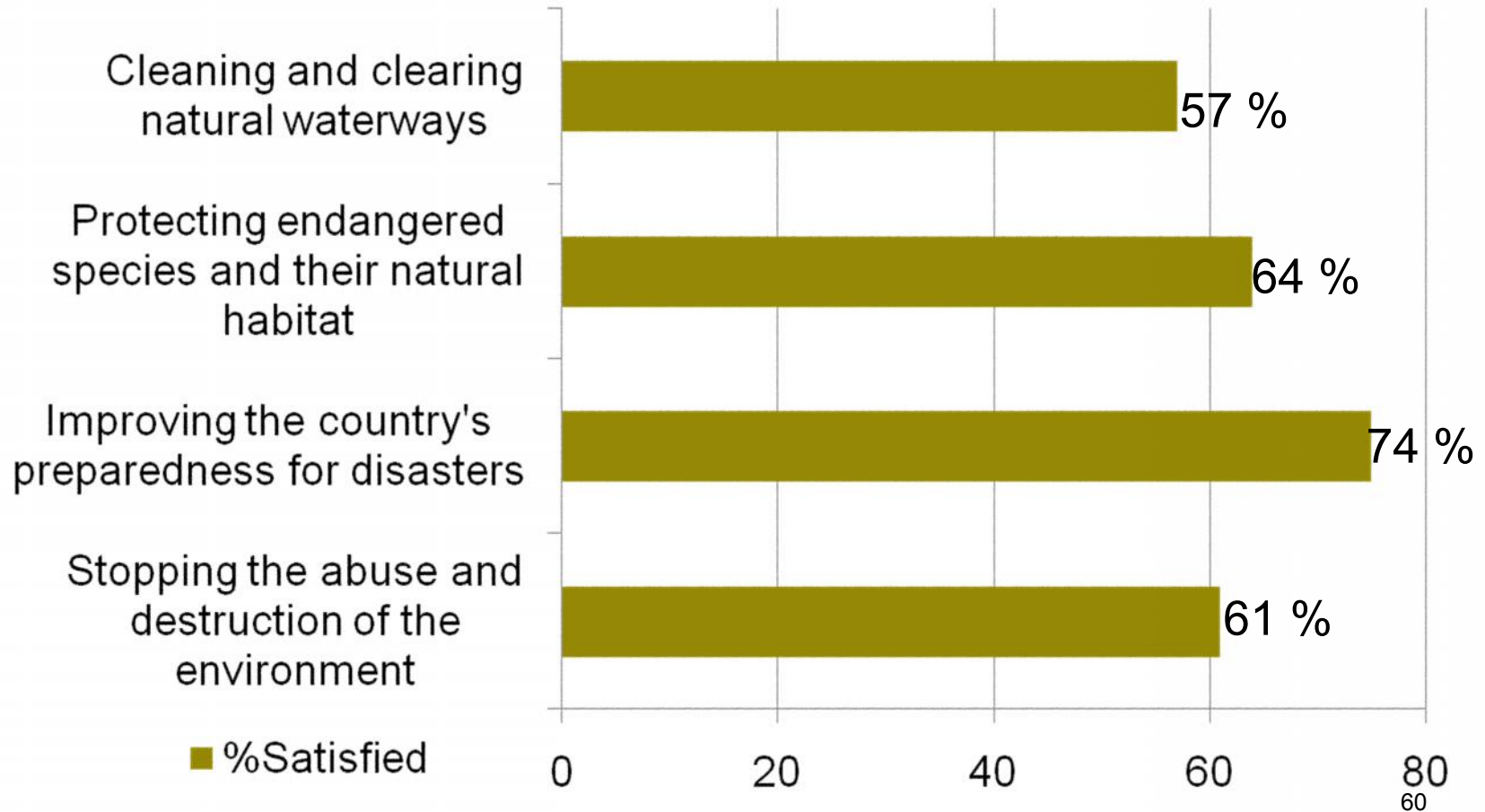
IMPROVED CONSERVATION, PROTECTION AND REHABILITATION OF NATURAL RESOURCES

E.O. 26 NATIONAL GREENING PROGRAM

■ Government Tree Planting Program



Performance of President Aquino on Environmental Governance



OVERALL PERFORMANCE

(Pulse Asia Survey)

“Efforts of government in stopping the destruction & abuse of environment”

Period	Approval Rating	Disapproval Rating	Net Approval Rating
October 2009	+27	-39	-12
March 2011	+48	-16	+32
June 2011	+50	-14	+36

A photograph of a waterfall in a lush, green tropical jungle. The waterfall is a single, vertical stream of white water falling into a pool. The surrounding area is filled with dense, vibrant green foliage, including various ferns and trees. In the foreground, there are dark, wet rocks. The scene is framed by hanging tree branches and leaves at the top. A semi-transparent rectangular box is overlaid on the lower half of the image, containing the text "THANK YOU!" in a bold, yellow, serif font.

THANK YOU!